

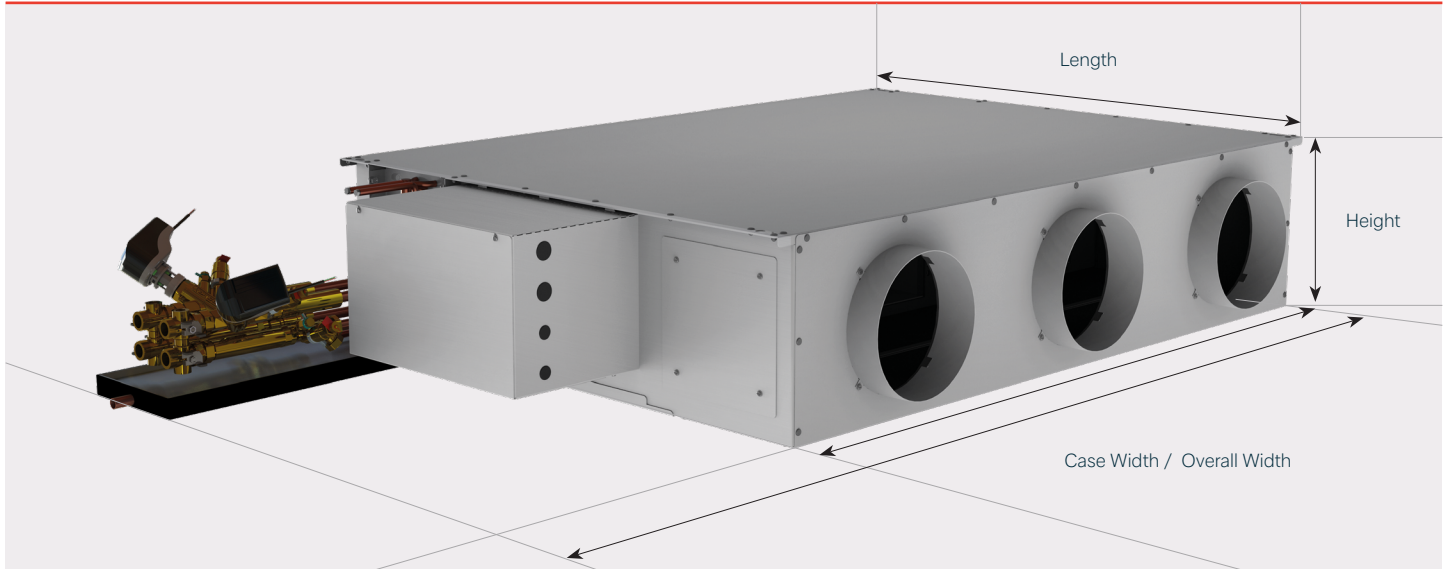
# EVO235 Exposed Installation



## Unit Performance

SIZE	Guide NR	Airflow l/s	ESP Pa	SFP W/(l/s)	Sensible Cooling 6-12°C	Total Cooling 6-12°C	Sensible Cooling 8-14°C	Total Cooling 8-14°C	Sensible Cooling 10-16°C	Total Cooling 10-16°C	LPHW Heating 80-60°C	LPHW Heating 70-40°C	LPHW Heating 45-40°C
100	35	53	30	0.16	817	996	685	787	683	683	1059	503	453
200	35	79	30	0.18	1254	1529	1066	1225	986	986	1853	728	862
250	35	85	30	0.21	1353	1650	1150	1322	1085	1085	1962	783	933
300	35	130	30	0.21	2067	2521	1760	2023	1546	1546	2956	1226	1422
350	35	120	30	0.22	1908	2327	1624	1867	1479	1479	2828	1184	1389
400	35	188	30	0.21	2995	3652	2546	2926	1967	1967	4125	2480	1956
500	35	191	30	0.22	3038	3705	2589	2976	2152	2152	4318	1438	2156
550	35	201	30	0.23	3200	3902	2724	3131	2328	2328	4447	1463	2225
600	35	225	30	0.20	3580	4366	3045	3500	2674	2674	5175	1682	2480
650	35	237	30	0.22	3769	4596	3206	3685	2795	2795	5328	1718	2595
100	38	66	30	0.16	1008	1229	831	933	712	712	1368	707	488
200	38	103	30	0.19	1575	1921	1298	1458	1113	1113	2059	1103	762
250	38	104	30	0.21	1589	1938	1310	1472	1122	1122	2079	1114	769
300	38	181	30	0.22	2732	3332	2247	2524	1917	1917	3385	1939	1339
350	38	201	30	0.22	3068	3985	2559	2940	2142	2142	3619	2058	1483
400	38	240	30	0.22	3614	4407	2970	3336	2532	2532	4799	2571	1775
500	38	253	30	0.21	3821	4660	3142	3530	2682	2682	5059	2710	1872
550	38	277	30	0.24	4183	5101	3440	3864	2935	2935	5539	1923	2049
600	38	295	30	0.20	4927	6008	3659	4356	3282	3282	5681	2067	2531
650	38	319	30	0.22	5245	6396	4020	4785	3503	3503	5945	2067	2655

# EVO235 Exposed Installation



## Data Dimensions

Size	Case Width (mm)	Overall Width (mm)	Height (mm)	Length (mm)	Spigot Diameter (mm)	Weight (Kg)	Max (Amps)
100	616	803	235	900	200	37	0.68
200	916	1,103	235	900	200	48	0.68
250	916	1,103	235	900	200	52	1.28
300	1,216	1,403	235	900	200	60	1.28
350	1,216	1,403	235	900	200	64	1.92
400	1,516	1,703	235	900	200	78	1.92
500	1,816	2,003	235	900	200	86	1.92
550	1,816	2,003	235	900	200	92	2.60
600	2,116	2,303	235	900	200	97	2.60
650	2,116	2,303	235	900	200	103	3.28

## Performance Data Qualification

Ability have invested heavily in a new Fan Coil specific acoustic test suite and various analysing hardware and software packages. All of our FCU ranges have been fully acoustically tested in the new facility in accordance with the Real Room Acoustic Test Procedure published by the HEVAC Association. Using room volume, reverberation and background corrections, the Sound Pressure Levels measured under test conditions have been converted to Noise Rating (NR) Levels. In addition to this, Sound Power Level calculations have been undertaken from Sound Intensity measurements made in accordance with ISO 9614-1:2009. These SWLs have been correlated and verified with testing at the Institute of Sound and Vibration Research, University of Southampton, to BS EN ISO 3741:2010, with further corroboration against testing at Sound Research Laboratory. Tests have also been conducted in the new suite in accordance with BS 4856:Part 4.

Full setup and details available upon request.

Thermal performance selections based on Summer: 23°C 50% RH / Winter: 21°C 50% RH

All testing performed using standard units, featuring integral discharge plenums with circular connections. Units are fitted with G3 filter media and (unless specifically mentioned) include heat exchangers with 12FPI fin pitch.